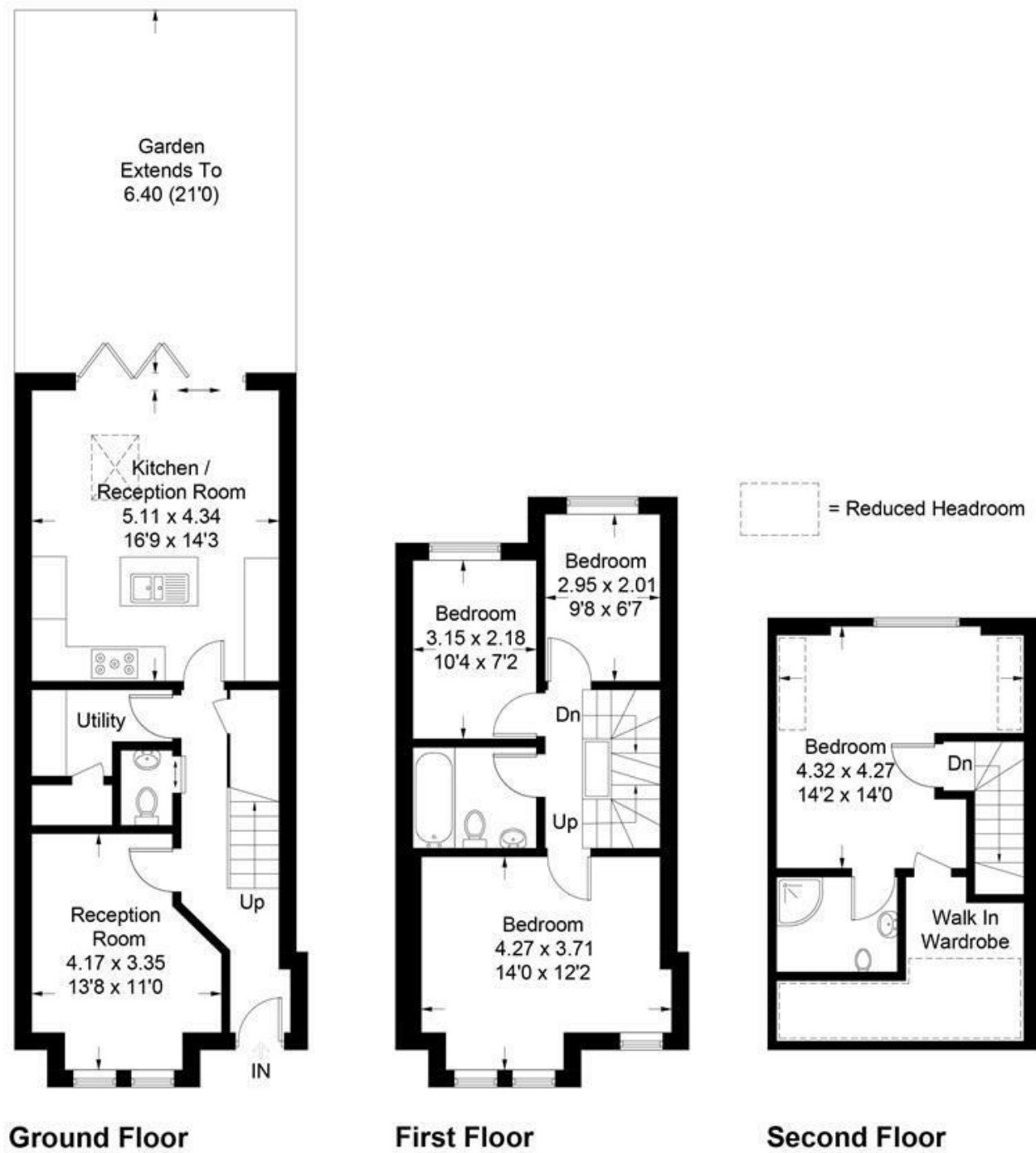


Julien Road, W5

Approximate Gross Internal Area = 122.3 sq m / 1317 sq ft
(Including Reduced Headroom)



HOUSE - TERRACED

FEATURES

Julien Road W5
£3,800 PCM

Measured in accordance with RICS Code of Measuring Practice. To be used for identification and guidance purposes only. Whilst every care is taken in the preparation of this plan, please check all dimensions, shapes and compass bearings before making any decisions reliant upon them. www.floorplansarcade.com © 2021 info@floorplansarcade.com

HOUSE - TERRACED

Julien Road W5

£3,800 PCM

New build immaculate four bedroom house situated conveniently in the catchment area for Mount Carmel and Little Ealing schools and also affording easy access to Northfields tube station, shops and restaurants.

The accommodation is in fantastic condition and has been completed to a very high standard whilst boasting period features, it comprises, two bathrooms one en-suite, open plan fitted kitchen with breakfast bar and separate utility room, down stairs WC and a spacious dining area with bifold doors opening to a private garden. Other benefits include under floor heating throughout the down stairs and the most up to date air source heat pump. An air source heat

